

## Technical Information for HIM

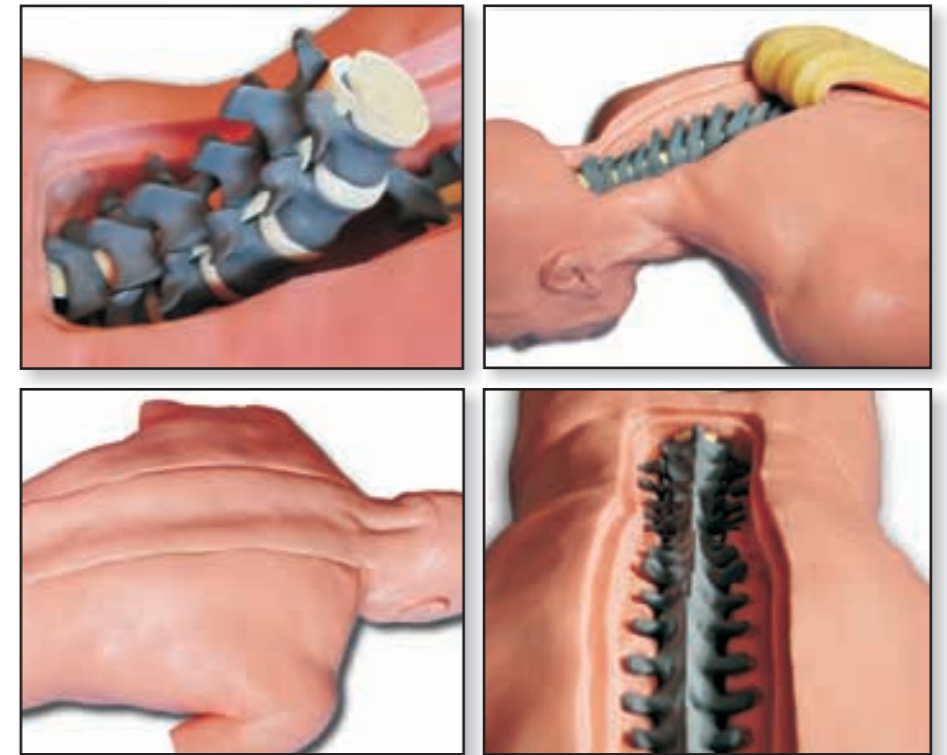
<b>Weight:</b>	20kg / 44lbs
<b>Length:</b>	1m 7cm / 42 inches
<b>Anatomy:</b>	Complete spinal column (from C1 to coccyx)
<b>Removable parts:</b>	Top dermal layer cutout above C1 to L5 Top dermal layer cutout above the sacrum Lumbar spine (L1-L5)

Personalised ID tags come with HIM for easy identification.



**him**  
Human Injection Model

The perfect radiopaque simulation model  
for pain management techniques



**him**  
Human Injection Model

The perfect radiopaque simulation model  
for pain management techniques

**acommedical**  
Solutions for Innovative Minds

Fairfield House Fairfield Road  
New Romney Kent TN28 8HN

Tel: +44 (0) 1797 361 036 Fax: +44 (0) 8082 089 874

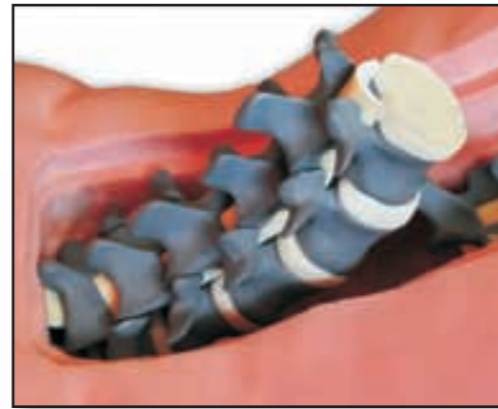
Email: [info@acommedical.com](mailto:info@acommedical.com)

[www.acomedical.com](http://www.acomedical.com)

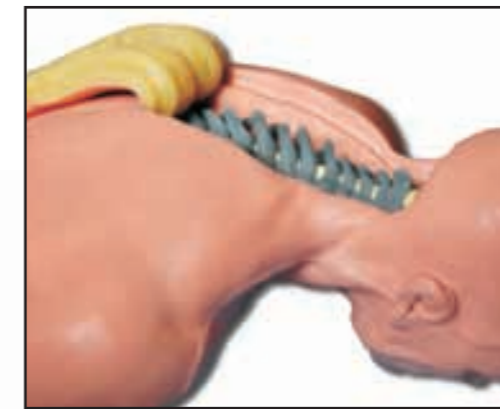
**acommedical**  
Solutions for Innovative Minds

The Human Injection Model (HIM) is equipped with an anatomically accurate spinal column to help teach needle placement for a wide range of techniques that require fluoroscopic guidance such as:

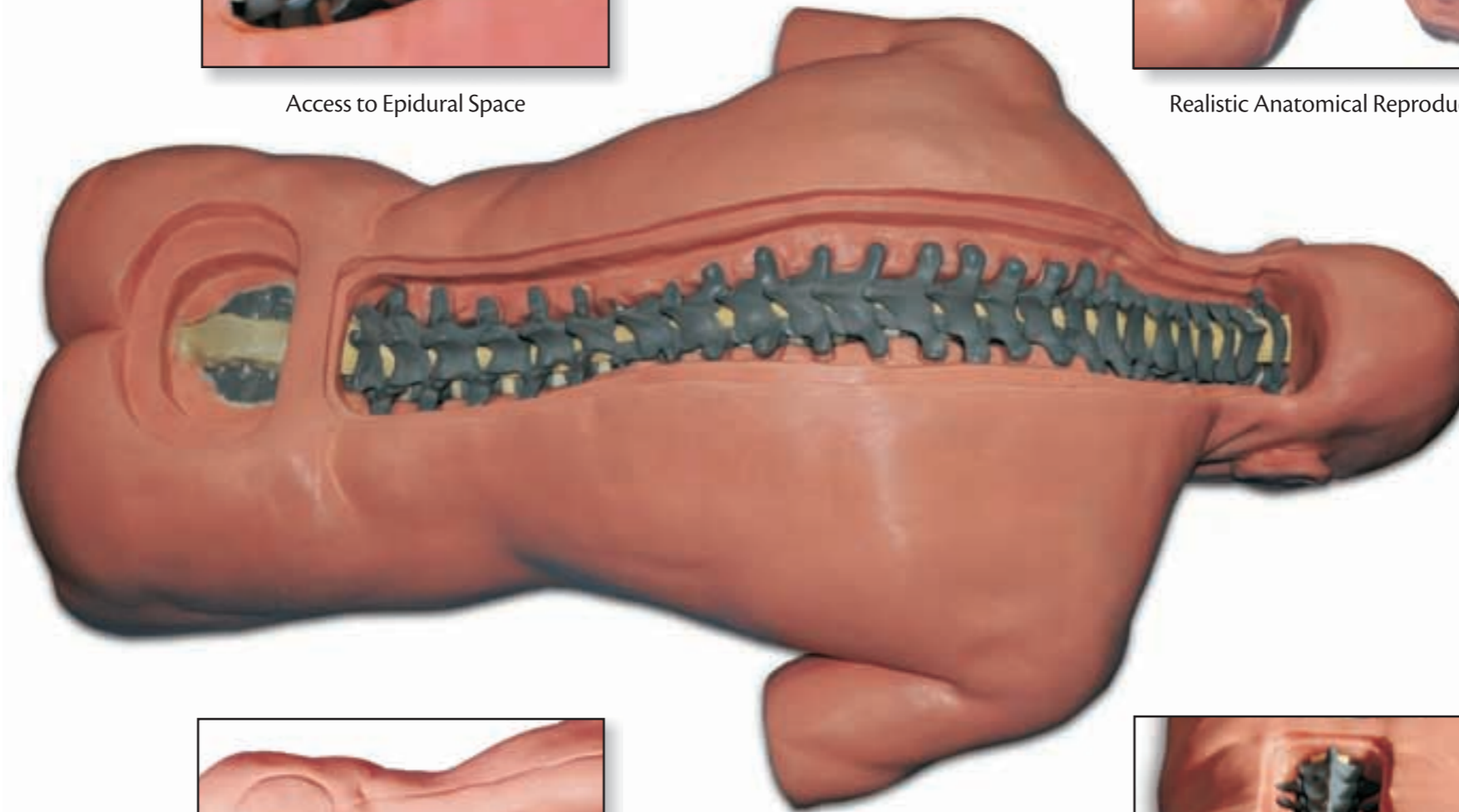
- Caudal injections
- Epidural injections
- Elective nerve blocks
- Nerve root blocks
- Medial branch blocks
- Facet joint blocks
- Sacro iliac joint blocks
- Needle Placement for radio-frequency treatments
- Spinal cord stimulators
- Spinal endoscopy
- Intradiscal procedures
- Vertebroplasty



Access to Epidural Space



Realistic Anatomical Reproduction



Removable Dermal Layers



Fully Radiopaque Spine

The reusable HIM is the future of pain management education. There is no need to incur the risk of biological contamination and costs associated with learning on fresh or frozen cadavers.

**Enjoy the cost-effective, ideal learning solution with HIM.**

HIM is comprised of durable synthetic materials to make the training experience as realistic as possible. The spinal column is radiopaque with access to the epidural space and the intervertebral discs.

The lumbar column (L1-L5) is completely removable as well as the top dermal layers. Every component of HIM can be either repaired or replaced when necessary.

The HIM is a lightweight model that offers a unique alternative to the training experience.

**acommedical**  
Solutions for Innovative Minds  
[www.acomedical.com](http://www.acomedical.com)

**him**  
Human Injection Model

With HIM, you can be sure to have perfect images of the anatomical markers needed to learn needle placement. This model provides the ideal learning situation for those perfecting their skills.



AP view of cervical spine



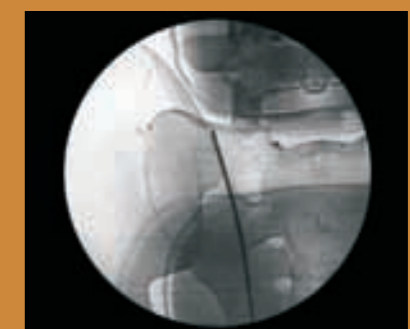
Lateral view of cervical spine



AP view of lumbar spine



Vertebroplasty procedure at T12\*



Sacro-iliac joint denervation\*\*

\*Vertebroplasty is associated with products sold by Stryker® \*\*Using the NeuroTherm Ltd. Simplicity III probe